

Greenteeth® Replacement Wheel Installation Instructions Vermeer 30TX



If you have any questions or concerns, *please call 1-800-473-3683*



BEFORE YOU BEGIN

Read these instructions completely and carefully.

- **Note to installer** – Be sure to leave these instructions for the consumer's use.
- **Note to consumer** – Keep these instructions with your Owner's Manual for future reference.
- **Skill level** – Installation of the wheel requires intermediate mechanical skills. Proper installation is the responsibility of the installer. Product failure due to improper installation is not covered under any warranty.
- **Helpful tips** – When installing a new v-belt it is recommended to check belt tension after 1 hour, 5 hours, 10 hours and 25 hours of machine operation as the belt will stretch.

IMPORTANT - Before you continue, please check the packing list to make sure it matches the contents of the boxes.



Disconnect Power

to machine to prevent any machine components from moving before proceeding. Failure to do so could result in death or serious injury.

FOR YOUR SAFETY read and observe all **CAUTIONS** and **WARNINGS** shown throughout these instructions. While performing the installations that are described in this booklet, gloves & safety glasses or goggles should be worn at all times.

Installation Preparation

TOOLS SUPPLIED:

½" Drive, ½" 6pt Impact Allen Wrench Socket

TOOLS YOU WILL NEED:

5/8" Socket Wrench
½" Drive Torque Wrench
Green-Seize™

TORQUE SETTINGS:

900 Series® Nut: 35ft. lbs. (47Nm)
LoPro® Bolt (lubricated with **Green-Seize™**): 180ft. lbs.
LoPro® Bolt (dry): 240ft. lbs.

MANUFACTURER'S PARTS LIST:

<i>Part Number</i>	<i>Description</i>
W-1645556	Greenteeth® Replacement Wheel for Vermeer 30TX
900LP-A	900 Series® LoPro® Pocket - Angle
926-WS2	900 Series® Wearsharp® 2-sided Tooth, for wheels 22" & smaller
LP-200	2" LoPro® Bolt
ALLENWRENCH-SOCKET	½" Drive, ½" 6pt Impact Allen Wrench Socket

Green Manufacturing, Inc.
9650 Packard Rd
Morenci, MI 49256
Phone 800.473.3683 • Fax 517.458.1550



Table of Contents

Disassembly Instructions	4
Assembly Instructions.....	7
Upgrade Assembly Diagram.....	12
Greenteeth [®] Guarantee.....	13
Material Safety Data Sheet	14

Disassembly Instructions

1. Disconnect Power to the machine.
2. Loosen and remove the three hydraulic motor mounting bolts. (Figure 1.1)



Figure 1.1

3. Remove hydraulic lines to the hydraulic motor. (Figure 1.2)



Be sure to take note of which line goes into which slot as it's important to reinstall them into the proper slots.



Figure 1.2

- Loosen and remove the four cutter wheel shaft bearing bolts.



Warning: The cutter wheel assembly weighs approximately 112 lbs. Use caution when loosening bolts. Cutter wheel assembly may drop unexpectedly. A floor jack or equivalent lowering device is recommended for easier removal. (Figure 1.3)



Figure 1.3

- Slide the cutter wheel shaft bearing off the cutter wheel shaft. (Figure 1.4)



Figure 1.4

6. Loosen and remove the 6 cutter wheel mounting bolts and nuts. (Figure 1.5)

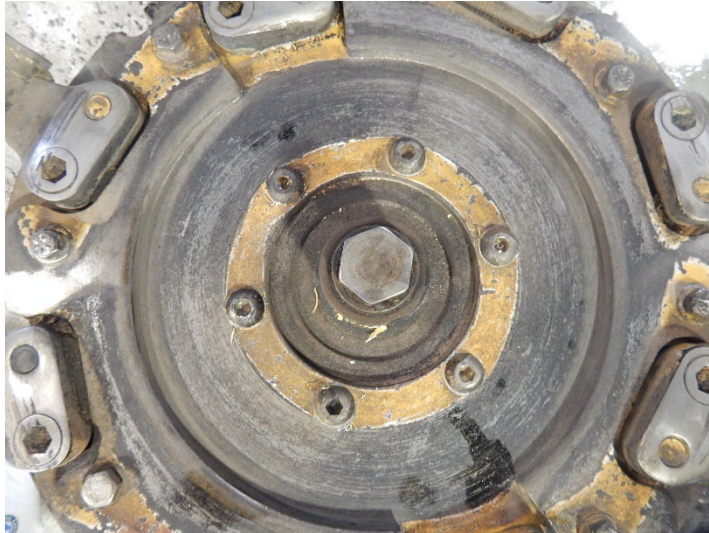


Figure 1.5

7. Remove the cutter wheel from the cutter wheel hub. Clean the hub & shaft before installing the new wheel.

Assembly Instructions

1. Install the Greenteeth® Replacement Wheel to the cutter wheel hub. (Figure 2.1)

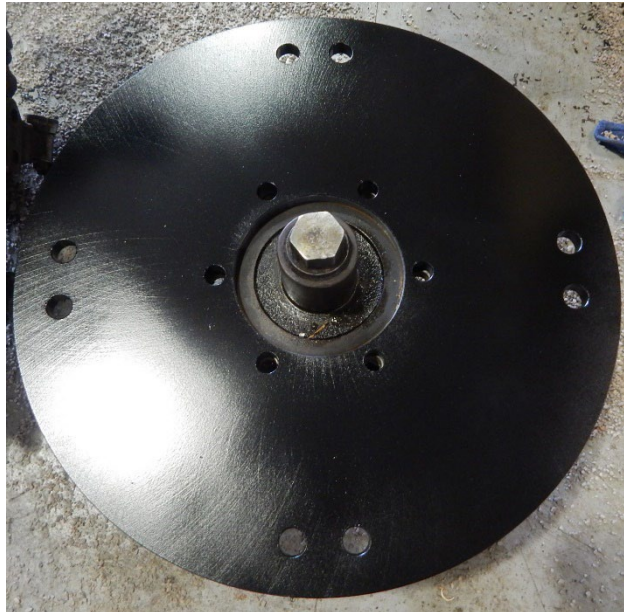


Figure 2.1

2. Reinstall wheel bolts into the wheel and hub. Thread nuts to bolts and torque down firmly to manufacturer specifications. (Figure 2.2)



Figure 2.2

3. With the grease fitting on the cutter wheel bearing facing you, and the hydraulic inlet fitting on the hydraulic motor facing up, slide the cutter wheel assembly in place onto the machine. **A floor jack or equivalent lifting device is recommended for easier installation.** (Figure 2.3)



Figure 2.3

4. Reinstall the 3 hydraulic motor mounting bolts. (Figure 2.4)

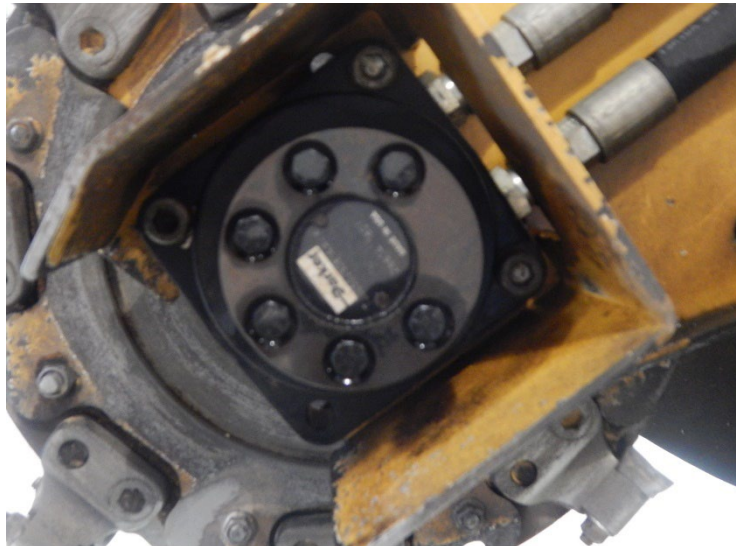


Figure 2.4

5. Re-attach the hydraulic lines to the motor. (Figure 2.5)

 **Be sure that you are installing the lines back into the proper slots.**



Figure 2.5

6. Reinstall the four cutter wheel shaft bearing bolts. (Figure 2.6)



Figure 2.6

7. Apply **Green-Seize™** to the threaded end of two **LoPro®** bolts.
8. Install the lubricated **LoPro®** bolt into the counter-bored hole of an angled **LoPro®** pocket, and then do the same to the adjacent pocket of that set.
9. Slide the **LoPro®** bolts through the empty holes in the wheel and thread them into the adjacent pocket's threaded holes. For now, firm up the **LoPro®** bolts until the pockets are seated. (Figure 2.7)
10. Proceed to the pocket mounting hole set below the new pocket set installed in step 9.
11. Repeat steps 7 through 10 for the next three pocket sets on the machine.
12. Your wheel should now match the **Upgrade Assembly Diagram on page 11**.

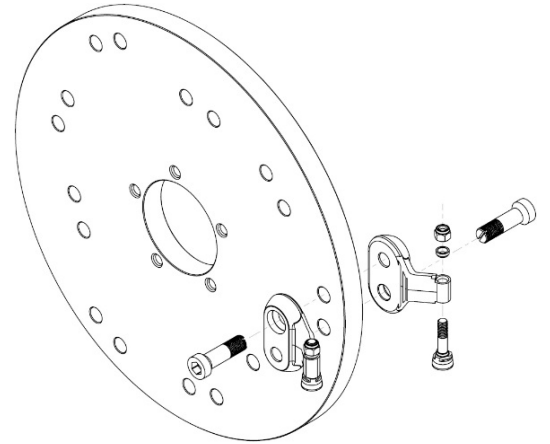


Figure 2.7

13. Make sure the pockets are seated on the wheel, and the bolts are seated in the pockets. Continue tightening your **LoPro®** bolts until they are torqued to 180ft. lbs. (240 ft. lbs. dry)
14. Install your teeth with the carbide facing down. The shoulder of the tooth will meet the flat indent of the pocket and the tooth will not rotate. Insert spacer over shank Chamfer down then thread one of the lock nuts onto the top portion of the tooth. Hand tightening is good for now. Repeat until all teeth are installed. (Figure 2.8)
15. Before torquing the tooth down, first, make sure that the tooth is seated properly in the pocket. Then tighten the top nut until the tooth is firmly seated and torqued to 35 ft. lbs. (47 Nm). You may need to hold the tooth in place. Repeat until all teeth are properly torqued.

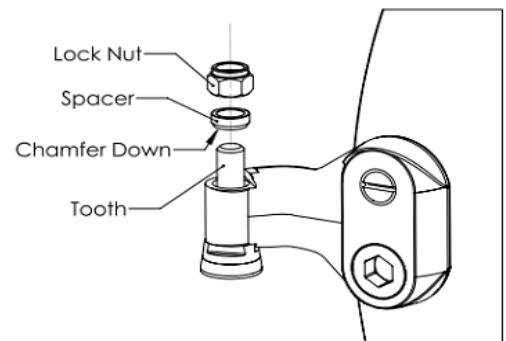


Figure 2.8



Over-tightening the nut will stretch the threads and degrade the fastener's ability to retain the tooth.

16. Once all pockets and teeth are torqued properly, manually rotate the cutter wheel to ensure there is adequate clearance for the newly installed setup. If any teeth are rubbing or hitting on any part of the machine, do not proceed further. Remove the obstructed tooth/teeth and call Green Manufacturing, Inc. right away. (Figure 2.9)



Figure 2.9

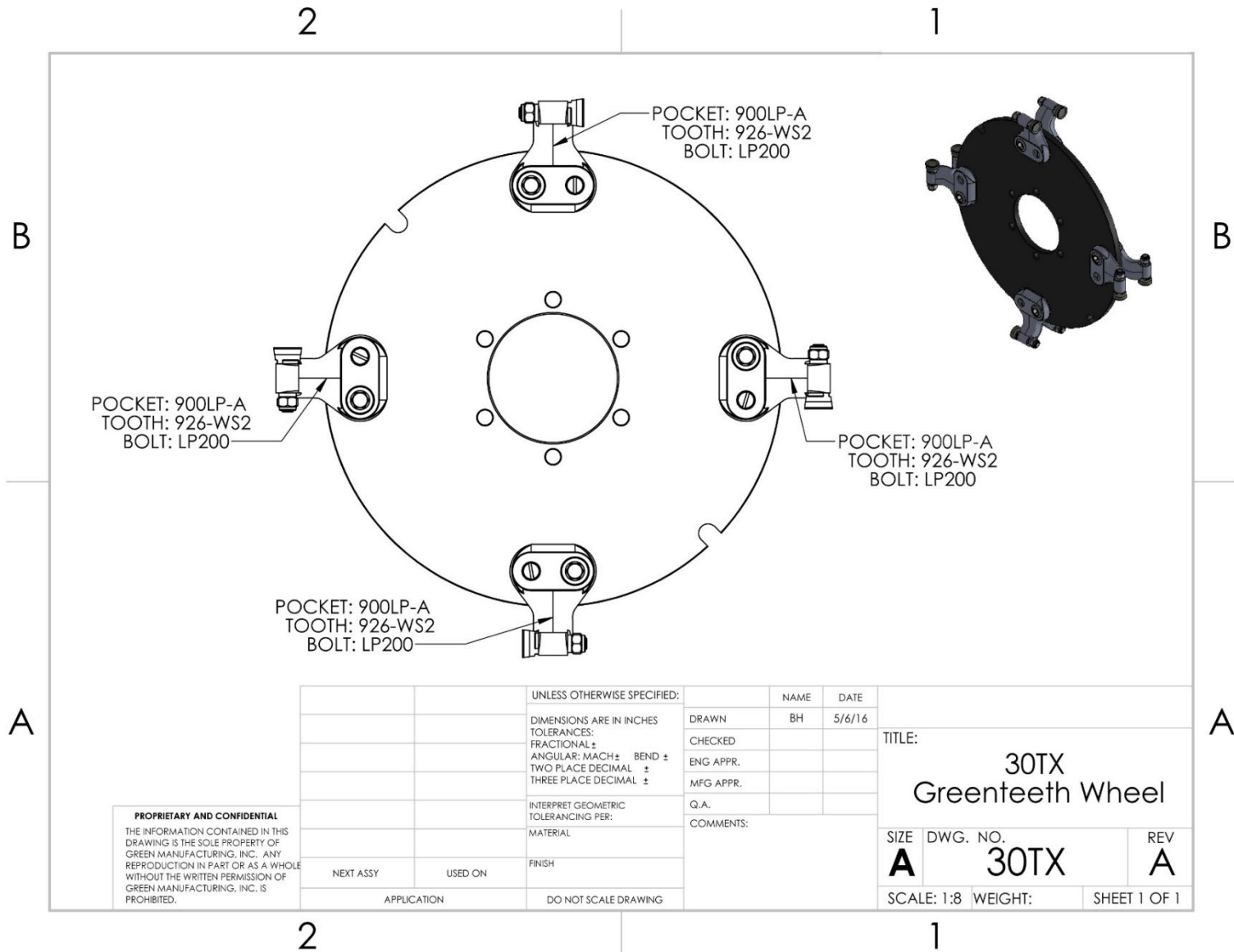
17. If determined that there are no obstructions, reconnect power to the machine.
18. Start the machine engine and engage the wheel.
19. Ensure there are no noises emanating from the upgrade installation.

Please note that all fasteners, whether they are nuts or bolts, can loosen up from time to time due to vibration. We recommend that you check your bolts periodically.

If you dull or damage a cutting edge, you can rotate your tooth by following these steps:

- Loosen the nut with a standard wrench.
- Tap the tooth down.
- Rotate the tooth.
- Reposition the tooth in its seat.
- Retighten the nut to the proper torque specifications.

Upgrade Assembly Diagram



GREENTEETH® GUARANTEE

NEW SETUPS AND FIRST TIME CUSTOMERS:

If you purchase a **Greenteeth®** setup and are not completely satisfied with its performance, please contact Green Manufacturing at 800.473.3683 to request a return authorization within 30 days of the purchase date for a product refund or exchange.

WARRANTY:

If you are not completely satisfied with your purchase, please contact Green Manufacturing, Inc. at 800.473.3683 to request a return authorization within 30 days of purchase date for a product refund or exchange. We strive to provide exceptional quality products. Our products undergo a stringent quality control process, however if you feel that there is an issue with the quality of your product, please contact Green Manufacturing, Inc. immediately. We will accept unused parts for return or exchange for up to 30 days from the date of purchase with proof of purchase included with the return.

Seller's warranties against defects and non-conformities and defects shall continue to apply only so long as the Goods: (i) have been installed, maintained and used in conformity with instructions furnished by Seller from time to time, if any, and otherwise in conformity with the highest industry practices; (ii) have been subjected to normal use for the purpose for which the Goods were designed; (iii) have not been subjected to misuse, negligence or accident; (iv) have not been altered or repaired by persons other than Seller or Seller authorized warranty service providers in any respect which, in the judgment of Seller, adversely affects the condition or operation of the Goods; and (v) have been fully paid for. IN NO EVENT SHALL SELLER BE LIABLE FOR ANY SPECIAL, INDIRECT, EXEMPLARY, INCIDENTAL, CONSEQUENTIAL, OR PUNITIVE LOSSES OR DAMAGES (INCLUDING, WITHOUT LIMITATION, BUSINESS INTERRUPTION, REVENUE OR PROFITS, FEES OR FINES), EVEN IF SELLER HAS BEEN ADVISED OR MADE AWARE OF THE POSSIBILITY OF ANY SUCH LOSSES OR DAMAGES AND REGARDLESS OF WHETHER THE CLAIM IS BASED ON CONTRACT, TORT, STRICT LIABILITY, OR OTHER THEORY OF LIABILITY. Seller's cumulative liability for all losses and damages under these General Terms and Conditions or under any of the Related Agreements (including, without limitation, those arising out of contract tort (including negligence), strict liability, warranty, or other theory of liability) shall not exceed (a) in the case of any services provided or to be provided by Seller, the amount of the fees payable by Buyer for such services under the applicable Related Agreement, and (b) in the case of any products or devices provided or to be provided by Seller, the amount of Seller's labor services associated with the product sale. Seller reserves the right to make, without notice to Buyer, alterations to a product that do not materially affect agreed specifications or the product's form, fit or function.

MATERIAL SAFETY DATA SHEET

I - PRODUCT IDENTIFICATION

Trade Name: Tungsten Carbide **Chemical Family:** Refractory Metal Alloy

Chemical Formula: WC **CAS#:** 12070-12-1

II - HAZARDOUS INGREDIENTS

Hazardous Components % OSHA/PEL ACGIH/TLV Sec. 302 Sec. 304 Sec. 313

Tungsten Carbide 0-100 N/E N/E No No No

Tungsten compounds 0-100 5 mg/m³ C - 1 0 mg/m³ No No No

HM IS Ratings (0-4): Health: 3 **Flammability:** 0 **Reactivity:** 0

HM IS Protective Equipment: H: glasses, gloves, clothing, combo respirator

III - PHYSICAL DATA

Boiling Point: 6000 oC **Melting Point:** 2820 - 2940 oC

Evaporation Rate: N/A **% Volatiles:** N/A

Solubility in H₂O: Insoluble **Vapor Pressure:** N/A

Vapor Density: N/E **Specific Gravity:** 13.6 gm/cc at 18 oC

Appearance and Odor: Grey to black powder, odorless **Molecular Weight:** 195.86

IV - FIRE AND EXPLOSION HAZARDS DATA

Flash Point: N/A **Flammability:** Non-Flammable

Explosive Limits: Lower: N/A **Upper:** N/A

Extinguishing Media: Use suitable extinguishing media for surrounding materials and type of fire.

Special Fire Fighting Procedures: Firefighters must wear full face, self-contained breathing apparatus with full protective clothing to prevent contact with skin and eyes. Fumes from fire are hazardous. Isolate runoff to prevent environmental pollution.

Unusual Hazard: Dusts may present a fire or explosion hazard under rare favoring conditions of particle size, dispersion, and strong ignition source. However, this is not expected to be a problem under normal handling conditions.

V - HEALTH HAZARD INFORMATION

Routes of Entry: Inhalation, ingestion, skin or eye contact (for dusts, mists, powder, and fume).

Effects of Overexposure: Industrially tungsten does not constitute an important health hazard. Exposure is related chiefly to the dust arising out of the crushing and milling operations. Chronic inhalation of the dust may cause lung damage in humans. Heavy exposure to the dust or the large amounts of the soluble compounds produces changes in body weight, behavior, blood cells, choline esterase activity and sperm in experimental animals.

Acute Effects:

Inhalation: Toxic by inhalation. May cause irritation to the mucous membranes, coughing, dyspnea, soreness in the chest, weight loss, hemoptysis, bronchitis, asthma, pulmonary fibrosis and radiological changes in the lungs.

Ingestion: May cause irritation to the gastrointestinal tract and diarrhea.

Skin: May cause irritation.

Eye: May cause irritation.

Chronic Effects:

Inhalation: May cause damage to the lungs.

Ingestion: No chronic health effects recorded.

Skin: May cause dermatitis, sensitization and eczema.

Eye: May cause conjunctivitis.

Medical Conditions Generally Aggravated by Exposure: Pre-existing respiratory and skin disorders.

Target Organs: May affect the respiratory system.

Carcinogenicity: NTP: No IARC: No OSHA: No

EMERGENCY AND FIRST AID PROCEDURES:

INHALATION: Remove victim to fresh air. Keep warm and quiet, give oxygen if breathing is difficult and seek medical attention.

INGESTION: If conscious, give 1-2 glasses of milk or water and induce vomiting (Never induce vomiting or give anything by mouth to an unconscious person). Seek medical attention.

SKIN: Remove contaminated clothing from affected area, brush material off skin. Wash affected area with mild soap and water. Seek medical attention if symptoms persist.

EYE: Flush eyes with lukewarm water, lifting upper and lower eyelids, for at least 15 minutes. Seek medical attention if symptoms persist.

VI - REACTIVITY DATA

Stability: Stable

Conditions to Avoid: None

Incompatibility (Material to Avoid): Chlorine, fluorine, nitrogen dioxide, nitrous oxide, iodine pentafluoride and lead oxide.

Hazardous Decomposition Products: None recorded.

Hazardous Polymerization: Will not occur.

VII - SPILL OR LEAK PROCEDURES

Steps to Be Taken in Case Material Is Released or Spilled: Wear appropriate respiratory and protective equipment specified in Section VIII. Isolate spill area and provide ventilation. Vacuum up spill using a high efficiency particulate absolute (HEPA) air filter and place in a closed container for proper disposal. Take care not to raise dust.

Waste Disposal Method: Dispose of in accordance with all local, state, and federal regulations.

VIII - SPECIAL PROTECTION INFORMATION

Respiratory Protection: NIOSH approved dust, mist, and vapor cartridge respirator.

Ventilation: Use local exhaust ventilation which is adequate to limit personal exposure to airborne dust levels which do not exceed the appropriate PEL or TLV. If such equipment is not available, use respiratory protection as specified above.

Protective Gloves: Rubber gloves.

Eye Protection: Safety glasses.

Other Protective Clothing or Equipment: Protective gear suitable to prevent contamination.

IX - SPECIAL PRECAUTIONS

Precautions to Be Taken in Handling and Storage: Store in a tightly sealed container in a cool, dry, well-ventilated area. Wash thoroughly after handling.

Other Precautions: Implement engineering and work practice controls to reduce and maintain concentration of exposure at low levels. Use good housekeeping and sanitation practices. Do not use tobacco or food in work area. Wash thoroughly before eating or smoking. Do not blow dust off clothing or skin with compressed air.

The above information is believed to be correct, but does not purport to be all inclusive and shall be used only as a guide. Green Manufacturing, Inc. shall not be held liable for any damage resulting from handling or from contact with the above product.

Greenteeth® are proudly manufactured in the USA by Green Manufacturing, Inc.

Green Manufacturing, Inc.
9650 Packard Rd
Morenci, MI 49256
Phone 800.473.3683 • Fax 517.458.1550

